



Colorado Mineral Society Mineral Minutes



Volume 83, Issue 6

October 2019

President's Message

by Debbie Kalscheur

Grateful for the dig and those we dig with

Greetings to all CMS members and supporters! Hard to believe that another Denver Show is in the rear-view mirror and another Autumn Season is upon us. I hope you have had a great dig season this Summer and in addition to some new specimens, have acquired a few amazing memories as well. If you have not had the chance to get out there yet, there is still time! There are a few CMS club trips still on the calendar for October.

Rockhounding is an amazing hobby that allows us to get out in the mountains, plains, canyons, rivers and just about anywhere in nature to discover mineral treasures that nature itself created. What a joy!

In addition to the experience of digging for rocks, there is also a great deal to learn about them and from them. When one begins on this journey, there always seem to be a new discovery right around the corner. I am grateful to CMS and its members for providing much of my mineral education over the years [and perhaps Mindat and Google contributed as well!]. Thank you to all of this year's field trip leaders and everyone who has volunteered their time to share their mineral knowledge and talents. You are making a difference more than you know!

CMS had another great Denver Show, winning the Prospector's Case competition again this year with an amazing "North Pole" presentation and impressive set of competitive minerals. I would like to offer both thanks and congratulations to everyone who lent their "best of the season" treasures to the case and to the team who accomplished the heavy lifting in getting the case imagined, set up and torn down [Chris, Gary, Amber, Wendy and Alice].

I would also be remiss not to mention the CMS Club table and display. Many people walking by complimented on the quality and presentation of the CMS table. The hockey theme was a hit as were the free rocks! Thank you [and congratulations] to all involved!

Finally, it is with great sadness that we learned that Jerry Kiefer passed away earlier this month. Jerry and Rita are long-term CMS members and have volunteered in many roles over the years. I have wonderful, warm memories of Jerry and paired with him as a cashier for CMS auctions for many years. Please keep Rita and the rest of Jerry's family in your thoughts and prayers over the coming months.

CMS General meetings begin again on October 4th. Hope to see you all there.

Next CMS General Meeting October 4th

The next CMS general meeting will be at St. Paul's Episcopal Church, Lakewood, 7:30pm-9pm. The speaker will be Ed Raines who will be talking about the . An abstract of the talk is located on Page 2.

We will set up a display case for members to bring their best specimens they purchased or traded at the Denver Show. You can renew your 2020 membership at the meeting and purchase UV lights and CMS stickers, so bring cash or your checkbook.

INSIDE THIS ISSUE

- 2 October Presentation
- 5 Founders Day Picnic Recap
- 6 Denver Show Recap
- 7 In Memoriam – Jerry Kiefer

October General Meeting Presentation

The Leadville Limestone—The Magic Rock of Central Colorado

by Ed Raines

Collection Manager at the Mine's Museum of Earth Science

The world-class ore deposits of the Central Colorado Mineral Belt are mainly hosted by the Leadville Limestone (Dolomite). The Gilman deposits were found by prospectors who noticed that the outcrops along the cliffs above the Eagle River resembled what they had seen at Leadville. The discovery of the Aspen deposits was made by prospectors who had noticed that the maps published in the Hayden Survey Atlas of Colorado showed the same rocks on the western side of the Sawatch Uplift as at Leadville on the eastern side of the uplift. This coincidence, however, is only an introduction to the story of the Leadville Limestone.

The Leadville limestone was deposited during the third great sedimentary sequence of the Phanerozoic on the North American Plate. This sequence was named the Kaskaskia Sequence by Sloss (1963) in his monumental studies of the sedimentary rocks of the North American Plate. The sequence consists of a package of sedimentary strata, bound by unconformities, that exists as rock units deposited in succession according to the environmental constraints prevailing at the time.

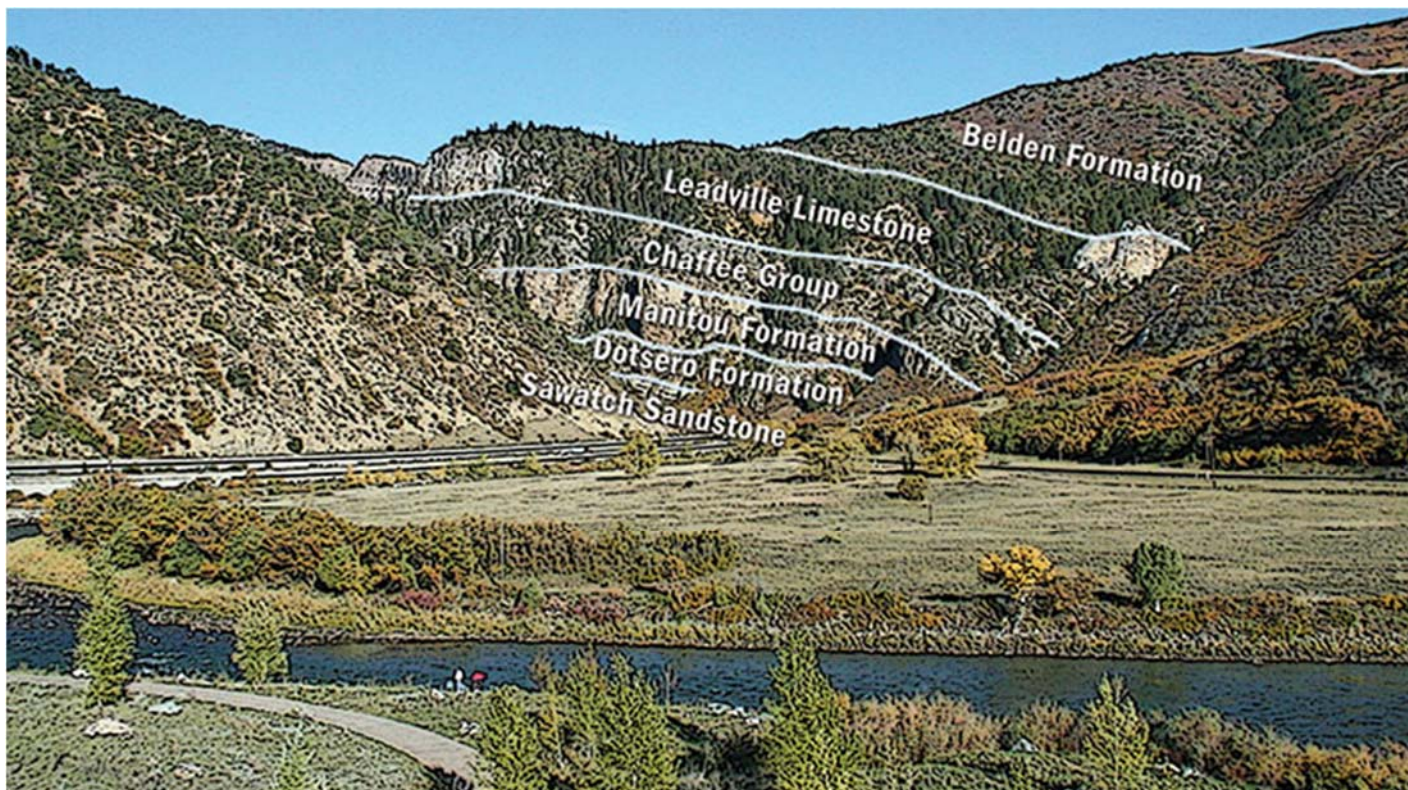


Photo credited to coloradomtn.edu of an outcrop near Glenwood Springs

All of the Paleozoic sequences of North America contain an abundance of carbonate rocks (limestones) derived from the body parts of carbonate secreting marine organisms that flourished in the warm subtropical to tropical waters surrounding and bathing the North American plate during this era. These organisms steadily evolved into impressive and robust reef-builders through the early Paleozoic (Cambrian through Devonian periods). In the late Devonian a series of mass extinction events largely decimated these reef-builders leaving an ocean floor populated with much less robust carbonate secreting organisms. The best way to quickly comprehend the change is to simply compare the appearance of Tabulate and Rugose Corals, along with Stromatoporoid Sponges, to Bryzoans and Crinoids. Mississippian-aged limestones dramatically reflect this change. And, for the most part, their fossilized communities lack the porosity and permeability that is relatively common in reef sequences.

Continued on Page 3

The Leadville Limestone (continued)

The end of the Kaskaskia Sequence is marked by a large regional unconformity that resulted from a significant drop in sea level. As the shallow seas withdrew from the platform of the western North American plate, the new limestones were subjected to a steady advance of dolomitization through the mixing of meteoric waters with the sea water in the carbonates. This was followed by weathering with karst caverns, sinkholes, solution enlarged vertical joints, channels, and solution breccia-rubble zones in many areas of central Colorado. The lack of porosity in the Mississippian carbonates is dramatically reversed by both the dolomitization and the development of a karst terraine.

The Absaroka Sequence, beginning with the Pennsylvanian period, saw a return of the seas. In central Colorado, significant amounts of black shale and gray clay are found in the Mississippian-aged paleo-karst solution features. These units are named the Belden and Molas formations. Beginning in the Late Middle Pennsylvanian, and continuing into the Permian, areas of present-day Colorado were uplifted to form the Ancestral Rockies. As erosion of the Ancestral Rockies developed, the Mississippian limestones were completely eroded and erased from the uplands, while the troughs between the mountain ranges were filled with the sedimentary products of that erosion. (Later uplifts reverse this topography, and bring the entire package of sediments preserved in the troughs toward the surface.) Along the eastern slope this material is known as the Fountain Formation, while on the western slope it is named the Maroon Formation.

To the end of the Absaroka sequence, the present-day Colorado Western Slope remained positive—above sea level. For the most part, this also remains the case during the first third of the Zuni Sequence; but at about 97 million years ago the Western Interior Basin began to form as a result of subsidence from the tectonic forces created by the rapid subduction of the Farallon plate under the North American Plate. The subsidence led to flooding with the Dakota-J transgression leading the way. Ultimately there are four Transgressive-Regressive cycles in the seaway sequence between 97 to 67 million years ago.

Beginning at about 75 million years ago, and continuing to about 35 million years ago, a series of uplifts and igneous intrusions warped both the eastern portions of the arc and the western margins of the seaway. Today we refer to this long-lived series of deformations as the Laramide Orogeny. After a five million year pause, volcanism returned to the western portion of the North American Plate at about 30 million years and continued until about 10 million years ago. This period of renewed volcanism is simply called Mid-Tertiary Volcanism.

During both the Laramide Orogeny and Mid-Tertiary volcanism numerous intrusions generated many hydrothermal circulating cells which mineralized many areas in what we now call the Colorado Mineral Belt. Some of the best known sites are areas in the central area of the mineral belt where the dolomitized and karstified Paleozoic limestones provided a wonderful host rock for these ore forming solutions. The ore deposits at Leadville, Gilman, and Aspen are known far and wide among geologists, mineralogists, geochemists, mining engineers, mineral collectors, mining historians, and tourists.

SPEAKER BIOGRAPHICAL SKETCH:

Ed Raines is the Curator and Collections Manager at Mine's Museum of Earth Science and noted expert on Colorado minerals and mining history. He has served as President of the Mining History Association and the Friends of Mineralogy – Colorado Chapter. He has authored many works on Colorado Mining Districts.



Ed Raines

CMS Junior Rockhound Program- October 4th

by MistyAnn Bateman, Junior Rockhound Coordinator

For October's meeting we will be learning about fossils and how they are made. If you have a fossil bring it to show the group.

Thank you Wendy and Greg for teaching this class, and Randy for letting us borrow his fossil book.



CMS Education Update

For the past couple of years, CMS has been fortunate to have had Susan Gardner, wire wrapping “teacher-extraordinaire”, offering her expertise to CMS membership. The CMS Board of Directors and Susan are pleased to announce additional course offerings this Fall. The Beginner Wire Wrap class is planned for **November 16, 2019** and Advanced Class for **December 14th**. Both classes will be on a single Saturday and will be held at Lithos in Arvada. Plan on coming to the October meeting to sign up. Please note that we cannot hold a spot until payment is received. Payment by check or exact cash is appreciated. Also, refunds are only granted if a substitute is found to take your spot.

Beginning Wire Wrapping Course

Are you new to CMS or have been meaning to take the Beginning Wire Wrap class and yet to do it? Here is your chance!

The project kit that comes with tuition includes the materials needed to make the pendant with copper wire and contains extra wire so you can make more pendants at home after class using your own stones. Or you can bring a stone to class that you have found. Please note that maximum length/width of stone is 3 inches in order to work with the pattern for the class. Students can purchase sterling silver kits from Lithos on the day of class. Kits are \$18 for the 22g wire, 5ft square and 5ft 1/2 round in a ready 'kit'. You will still get the full copper kit with tuition. Please indicate that you would like to purchase the silver upgrade when you sign up so Susan can make sure enough kits are available at Lithos on the day of class. CMS membership required to take the class.



Class Date: November 16, 2019
Time: 1 – 5/5:30 pm
Place: Lithos, 5695 Yukon St. Arvada CO 80002
Student Cost: \$30/person payable to CMS [the other \$30 tuition picked up by CMS]
Min/Max Students: Min, 10 / Max, 12

Advanced Wire Wrapping Course – Crystal Wrap

Just in time to make that perfect personal gift for Christmas! This class is being offered to those members who already have a working knowledge of wire wrapping. Please bring a crystal or stone that you may have found on a club trip and would like to wrap. If you do not have one in mind, Susan will have some on hand.

The project kit that comes with tuition includes the materials needed to make a crystal wrapped pendant with copper wire. Please note that maximum length/width of the crystal is 4 inches in order to work with the kits. Students can purchase sterling silver kits from Lithos on the day of class. Kits are \$18 for the 22g wire, 5ft square and 5ft 1/2 round in a ready 'kit'. You will still get the full copper kit with tuition. Please indicate that you would like to purchase the silver upgrade when you sign up so Susan can make sure enough kits are available at Lithos on the day of class. CMS membership required to take the class.

Class Date: December 14, 2019
Time: 1 – 5/5:30 pm
Place: Lithos, 5695 Yukon St. Arvada CO 80002
Student Cost: \$30/person payable to CMS [the other \$30 tuition picked up by CMS]
Min/Max Students: Min, 10 / Max, 12

CMS Founders Day Picnic Recap

Saturday, August 24th

The CMS Founders Day Picnic was held on August 24, 2019 at St. Paul's Episcopal Church. The picnic featured good food, good conversation, good weather, and above all, lots of great rocks and minerals collected by members on this year's CMS field trips. Bruce and Ben Geller created an online mineral trivia quiz on Canadian minerals that participants could use their cell phone to answer the questions in the quickest time. Thanks for John Smith for bringing a cake with the CMS logo, Eva Siemonsma for grilling up the hotdogs, and all other members who brought food to share. Members who could not attend the picnic made sure their great specimens were present for voting. Selections for the CMS Club Prospectors Case was made. Thank you to all the members who attended the picnic and helped pick the top specimens that were entered into the Club Prospector case.

Amber Brenzikofer and Gary Rowe put together a Canadian mountain and lake theme complete with icebergs made from selenite, marble, and blue agate; rock carved polar bear and walrus; and a backdrop poster of Bow Lake in Banff National Park, Alberta, Canada. CMS won 1st Place for the Club Prospectors Case Trophy again this year. Mary Schons came up with a Canadian hockey theme for the display case at the club table and was able to borrow her neighbor's hockey pucks and zambonis; she supplied the Stanley Cup that was filled with aquamarine from Mount Antero.



Photos by Amber Brenzikofer



CMS picnic attendees (above) and CMS cake (right)



CMS Prospectors Case that won 1st Place with specimen finds from 2019 club trips



CMS club booth display with 2019 finds from members

2019 Denver Gem & Mineral Show Recap

by Amber Brenzikofer

CMS was well represented at the 52nd Annual Denver Gem & Mineral Show on September 13-15, 2019 at the Denver Mart Expo Building. Thank you to all the CMS members who volunteered for various show committee positions, including security, admissions, treasurer, setup and take down, etc. Thank you to Gary Borkan for organizing the CMS club table, which included organizing the giveaway minerals, setting up the displays, and coordinating volunteers to man the table throughout the show. Thanks to those members who volunteered at the club table and promoted CMS to prospective members. Fridays are fun when all the school children stop by for a free rock and may need help with their show homework assignments. CMS gave away a ton of great rocks and minerals to kids and adults, so thank you to all those who provided donations for the give-away. A special thanks goes out to Dale and Virginia Block for putting together 500 grab bags on CMS's behalf for this year's show.



CMS club booth with Debbie Kalscheur and Linda Anderson

Photos by Amber Brenzikofer



Junior Prospector Winners: 1st Place and 3rd Place: Natalya Kent (center), 2nd Place: Alexandria Kent (left). Nick North (right) is presenting awards



CMS club booth with Debbie Kalscheur and Linda Anderson



Club Prospector Case Winner: 1st Place CMS with Debbie Kalscheur excepting award (center)

In Memoriam – Jerry Kiefer

1/22/1937 - 9/10/2019

It is with great sorrow to report Jerry Kiefer passed away on September 10, 2019. His full obituary is located at: <https://www.legacy.com/obituaries/denverpost/obituary.aspx?n=jerry-kiefer&pid=193929126>



Jerry Kiefer came to Grand Junction, CO from Elwood, Indiana with his parents Florence Hickner Kiefer and Jerome Kiefer, a native Coloradan. His father quickly infected him with a life-long love for canyons and campgrounds and especially for rivers where he fished, canoed and rafted the Grand Canyon 3 times with a group that included his protesting city-bred wife, Rita: one more testimony to his amazing powers of persuasion. His love for gems, minerals and rocks began at age 5 when he labeled his first find as #1. That passion endured until this September when, near dying, he could no longer see.

Despite a full career he remained involved with many charitable organizations, among them: Farm Worker Housing, Catholic Charities Northern where he acted as chairman of the board, The Columbine Club of CIVITAN where he helped build the Wilderness on Wheels trail. He also served on the Board of Guadalupe Community Center outside Greeley. Though not demonstrative by nature, Jerry took part in marches and protests against the violation of human rights, especially those of the underprivileged and racial minorities. After 30 years in Greeley, he and Rita moved to Evergreen and he spent more time with the **Colorado Mineral Society**, serving as president for two terms and going on field trips to indulge three passions his parents laid the ground for: photographing wildflowers, traveling and most important expanding his rock, mineral and gem collection.

Jerry is survived by Rita Brady Kiefer, his other-half/wife of 49 years, brother Dennis Kiefer (Karen), sister Carol Ann Niles(Bill), sister-in-law Joyce, nieces Jane Valencia (Andy), Deanna Vandermeer (Rod), Julie Kiefer (Rich Dorsky) and nephews David Kiefer (Linda), Kevin Kiefer (Barb), Jeff Niles (Angela), Drew Niles and Dan Niles (Nardia). He is pre-deceased by his parents and brother Bill.



Memorial services will be held in Lakewood, Greeley, and Grand Junction where Jerry's ashes will blend with the Colorado River. Times and places will be sent out later by email. Our deepest sympathy to Rita and family.

Jerry and Rita Kiefer at the CMS December 2018 Holiday Party at the Clements Center. Cheryl Harrison is standing behind them. Photo taken by Amber Brenzikofer.

May 2019 Raffle News

Raffle ticket sales on May 3th totaled an extraordinary amount of \$626 with a total retail value of \$468. **This raffle ticket sales exceeded last year's record sales - thanks to all the participants and donors.** The most popular item was the fluorite/quartz specimen donated by **Marty Zinn** (\$215). The lucky winner was *John Smith*. *John Smith*, smiling, also won the second most popular specimen, the calcite on fluorite (\$128), it was donated **anonymously - thank you mystery person**. *Amber Brenzikofer*, smiling and waving, won the amber with bug specimen (\$95) which was donated by **Samora Minerals, Jen Jackson**. **John Smith** donated a beautifully faceted topaz from the Joe Dorris Tarryall claim in Colorado (\$87). This was won by *Wayne Smith* (no relation to John). *John Salvino* won the snake skin agate specimen that came from the **Disney Collection** (\$71). Last, but not least, *Bohdan Hall* won the amethyst specimen (\$30) that was donated by **JK Stone, Frank Wang**.

The auction raffle ticket sales on May 4th amounted to \$185, with the retail value of \$255. The most popular item was the amethyst, from Argentina (\$50) donated by **Natural Selection Crystals, Jordan Lee Ruul** and won by *Jeanie Church*. The second raffle item was a creedite specimen from Arizona (\$47) donated by **Xtal - Dennis Beals Mineral** and won by *Ian Duncanson*. Next came the oreodont skull- oligocene, Brule formation, White River Badlands, Custer County, SD (\$41) donated by **Japheth Boyce** and won by *Jefrey Brown*. The last three specimens were won by a very lucky *Chad Nordahl!!* The 'velvet' malachite from the Congo (\$21) was donated by **The Enchanted Rock Garden, Peter Giangrande**; the calcite from Iowa (\$20) was donated by **Danzrockshop, Dan Zellner**; and last but not least, the barite specimen from Peru (\$6) was donated by **Marty Zinn**.

Congratulations to all our lucky winners, especially our lucky triple winner on Saturday!!!

The raffle proceeds are spent on CMS education, the purchase of library materials, CSM scholarships and the state science fair awards.

Thanks John Kleber and Kevin Atwater for helping with the raffles.

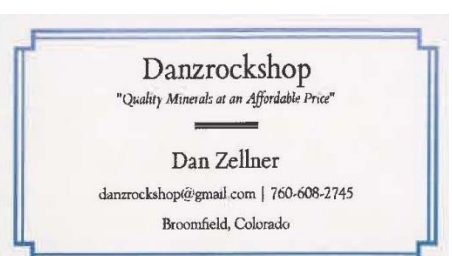
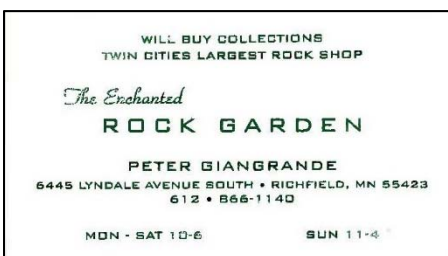
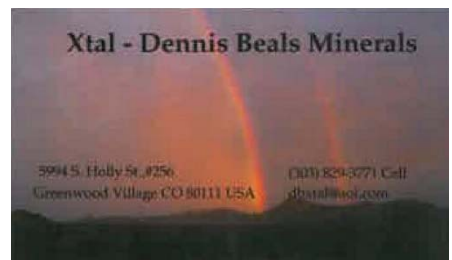
Submitted by Eva Siemonsma, CMS Raffle Manager



Marty Zinn

John W. Smith

Disney
Collection



WELCOME

New CMS Members

First Listing

Jason and Kim Baker & family
James Betsill
Jobi and Amy Carter
Cailey Cassanova
Jeremiah Clark and Teri Ann Kell
James Cox
Gary Curtiss
Julia Frazier and Eric Roberts & family
Adam Frost
Barbara and Jon Fyfe & family
Harold G. Hilley
David Hobart
Kristinn and Mike Hochstetler & family
Fred Jackson
Keita Kato
Bonnie Klamm
Joseph Natale
Lliory Orengo
Logan Pearson
Gwen Torres
Masaki Tsukada
Carissa Whelchel
Valorie and Carl Windholz

Second Listing

Sarah Bacon
Spencer Brigham
Phillip and Chantalle Butterfield & family
Michael and Jacque Carter
Charlene and Vincent Fellers & family
John Fiala & family
Jonathan Groves
Artem and Maria Kovalev
Stephanie and Liz Meadows & family
Melissa Pope & family
John Rady
Amy Rasberry-Matthias & Jeffrey Matthias & family
Amanda and Vinny Stine



**Per CMS Bylaws, comments concerning new, first listing members should be formally submitted to the President.*

Denver Gem & Mineral Show September 2019

Thanks to our Volunteers

To all the Club volunteers who lent their helping hand to the 52nd Denver Gem & Mineral Show - BE PROUD! You done good. Every year, no matter the theme, there is the same amount of strong effort and hospitality needed to set up the Show, to keep thing running smoothly, and to take it down. That's a lot of work! And you all did the work with grace and efficiency. Our Club folks contributed hours and fun to such things as taking admissions, skirting tables, setting up cases, providing security, selling grab bags, helping the treasury, chipping in with hospitality, repackaging liners, taking down cases, and all around helping with our beloved patrons, dealers and exhibitors. Thank you volunteers for helping produce a smooth and entertaining show. The rock community is better for your help. And we have you all down for next year - same time, same place, and feel free to bring family and friends. They'll thank you for it.

Best Regards,

George Daggett
2019 Show Chair



Denver Gem & Mineral Show 2019 - Winners in the Special Competitions

CMS Members highlighted in yellow

Richard M. Pearl Award: Phil Gregory (Elbaite on Quartz, Himalaya Mine, San Diego County, California)

C. E. Withers Award: 1st Place(a Tie): Eldon Hunewell (50 Years of Hunting Rocks in Colorado and Beyond)
Carolyn Manchester (Worldwide Tourmalines)

3rd Place: Judy and Ron Knoshaug (Worldwide Miniatures)

4th Place (a Tie): Dan and Dianne Kile (Amethyst from Thunder Bay, Ontario, Canada)

John Warn (Worldwide Tourmalines)

Donna Chirnside Memorial Museum Trophy:

1st Place: Royal Ontario Museum (Minerals of Canada)

2nd Place: Canadian Museum of Nature (Minerals of the Canadian Arctic)

3rd Place: Smithsonian Institution (Minerals of Canada)

Best of Species Trophy:

Thumbnail: Carolyn Manchester (Serandite, Poudrette Quarry, Mont Saint-Hilaire, Quebec, Canada)

Toenail: Nick North (Rhodochrosite, Poudrette Quarry, Mont Saint-Hilaire, Quebec, Canada)

Miniature: Nick North (Vesuvianite, Jeffrey Mine, Asbestos, Estrie, Quebec, Canada)

Cabinet(a Tie): Lesley Sebol (Selenite, Red River Spillway, Winnipeg, Manitoba, Canada)

Nick North (Selenite, Red River Spillway, Winnipeg, Manitoba, Canada)

Oversize Cabinet: Nick North (Manganite, Caland Pit, Atikokan, Ontario, Canada)

Best Fossil: Nicholas Kimber (Diplomystus dentatus (a fossil fish), Chordata - Actinopterygii, Green River Formation, Eocene, Kemmerer, Wyoming)

Prospector Trophy: Randall Kokkinen (Amazonite, Fluorite, Cleavelandite combo, Park County, Colorado)

2nd Place: Randall Kokkinen (Fluorite with Amazonite, Park County, Colorado)

3rd Place: Bill Mahnken (Smoky/Amethyst Quartz Crystal, Montana)

Junior Prospector Trophy:

1st Place: Natalya Kent (Smithsonite, Kelly Mine, New Mexico)

2nd Place: Alexandria Kent (Fluorite, Blanchard Mine, New Mexico)

3rd Place: Natalya Kent (Fluorite, Blanchard Mine, New Mexico)

Club Prospector:

1st Place: Colorado Mineral Society

2nd Place: Littleton Gem and Mineral Club

Individual Competitive Cases:

Worldwide Thumbnails - Kent Havens (Masters)

Worldwide Miniatures - Phil Gregory (Masters)

Educational, General Audience/Concept: Erin Delventhal (Advanced, What are Pseudomorph Minerals?)

Educational, General Audience/Concept: Michael Gobla (Novice, Minerals from Ontario, Canada)

Educational, Informed Audience/Concept: Stanley Korzeb (Advanced, Formation Mechanism of Precious and Base Metal Minerals in Epithermal or Hot Springs Systems)

Colorado Mineral Society General Meeting on May 3, 2019

Call to Order – Debbie Kalscheur, President at 7:30pm

General Announcements:

Debbie welcomed visitors and new members. Indicated that there was a position available on the board for someone to shadow for the Annual Auction Chairperson this year and take over next year. Other volunteer positions include someone to coordinate grab bags and a web developer.

Ben Geller talked about changes to the CMS Auction on May 4th, including the acceptance of credit cards and having bid slips filled out ahead of time before being allowed to put out specimens on tables. Ben gave a brief demonstration of Google forms sign-up.

Debbie presented Don and Phyllis Bray a lifetime membership award and name badges.

Loni Cole gave a Treasurer's report.

Leslie Osgood took membership renewals and read new member names.

Amber Brenzikofer is the CMS representative for the Denver Gem and Mineral Show. She passed around a volunteer sign-up sheet.

Raffle - Eva (see Raffle news in this newsletter)

Gary Rowe and the field trip coordinators presented the 2019 Field Trip summaries and logistics

Next CMS general meeting is October 4, 2019

Meet adjourned at 9:30pm.

Notes taken Amber Brenzikofer



Rocky Mountain Federation News

www.rmfmts.org

AFMS Newsletter

<http://www.amfed.org/news/default.htm>



CMS 2020 Membership Dues – Time to Renew

A membership form is located on the CMS website at www.coloradomineralsociety.com.

CMS Membership Dues:

Family: \$20 per year	Single: \$18 per year
Senior 65+ (single or family): \$15 per year	Junior (<12 years old): \$15 per year

CMS memberships run from January 1st to December 31st. Here are ways to pay your dues:

1. Pay with cash or check at the general meetings the first Friday of each month from October through May. Look for the Membership Chairperson to obtain a receipt and membership card.
2. Send a check made out to "Colorado Mineral Society" or "CMS" to P.O. Box 280755, Lakewood, Colorado 80228-0755. Please do not send cash through the mail. Membership cards will be mailed to you.

Also, due to RMFMS insurance and liability purposes, we need to know the month and year of your children's birthdays, so please provide this information when you renew your membership. The children's information will not be published. If you ordered a name badge, they will be available at the general meetings to pick up.

Colorado Mineral Society Board Meeting on September 17, 2019

Debbie Kalscheur called meeting to order at 7:08 pm

Attendees: John Smith, Amber Brenzikofer, Ben Geller, Leslie Osgood, Alice Gemmell, Eva Siemonsma, Debbie Kalscheur

Positions Review – 2020

Discussed 2020 lineup for Officer and Committee Chairpersons. John Smith to coordinate recruiting for nominations for open positions at least through October. Debbie Kalscheur will announce open positions at the October meeting and will run elections at the December.

- Open Officer Positions
 - President, 1st Vice President, 2nd Vice President, and Secretary
- Open Committee Chairperson Positions:
 - Greeters/Door Prizes – OPEN
 - Newsletter – Amber to renew, seeks to transition to successor
 - Trip Leader/Coordinator – OPEN
 - Auction Chair – Ben Geller to renew, seeks to transition to successor

Items for Board Approval/Alignment

- Wire Wrapping Class Offerings for remaining 2019
 - Susan Gardner is available for teaching classes to CMS in Fall. Classes would be held at Lithos. Classes will be a single day – Saturday or Sunday.
 - \$60 per student, 10 student min/12 student max
 - Ben moved to approve CMS supported (50% CMS/50% Student) offering of two wire wrapping classes. Beginner class in November and advanced project in early December. Motion approved.
- December/Christmas party meeting location
 - Board decided to keep Christmas party at St. Paul's this year.
- 2019/2020 Meeting Season
 - New venue search continues, but there is general agreement that likely we will need to keep with the current venue for the 2019/2020 meeting season
 - Eva confirmed St. Paul is reserved for CMS general meetings through 5/2020
 - Board will keep on looking for new venue with potential for a change in Fall 2020
- CMS Strategy
 - Draft is near-complete. Need one more 2-hour session to confirm content of draft. Committee will meet October 2
- Lifetime Member Candidates
 - Reviewed lifetime membership candidates, will be reconsidered after records review

Officer/Committee Reports

- Speaker/Field Trip Update – Gary
 - 2019 Trip Season continues in October. Members joining in Fall months will be members through 2020.
- Education Update - Ben
 - Ed Raines willing to offer Mineral Identification class in Spring 2020
 - A work effort is needed to sort through all specimens marked for education in the storage unit. Chosen specimens need to be documented as part of education inventory with the rest being released for other uses.
- Donations – Alice
 - Several donations collected during Denver Show
 - Anonymous donation of a collection in progress
- Membership – Leslie
 - Leslie read names of new members who joined over the summer
 - There are known to be a few that have still not been read off
- Raffle – Eva
 - Board approved a \$500 scholarship to the School of Mines, spend up to \$200 for supplies for the Youth Program and pay an advance to Susan Gardner for \$300 [class minimum].

Next CMS Board Meeting: Oct 15. Location: Leslie's unless otherwise communicated

Thank you to John Smith for his donation to CMS of a mini projector.

Meeting Minutes taken by Debbie Kalscheur

COLORADO MINERAL SOCIETY OFFICERS

2019

President: Debbie Kalscheur
First VP-Programs: Gary Rowe
Second VP-Education: Ben Geller
Secretary: Aaron Cross
Treasurer: Loni Cole

Appointed Board Members - Committee Chairpersons

Annual Auction: Ben Geller
Door Prizes-Guests: Cindy and Paul Hatfield
Library: Kevin Atwater
Display Chair: Chris Keilman
Membership: Leslie Osgood
Field Trip Leader: Gary Rowe
Field Trip Leader Co-Chair: Nels Grevstad
Nominations: John Smith
Grab Bags Coordinator: **OPEN**
Publications: Amber Brenzikofer
Historian: Amber Brenzikofer
Jr Rockhound Coordinator: MistyAnn Batemar
Jr Rockhound Assistants: Joanna Morsicato/Wendy Carley
Hospitality: Star Edwards
Donations: Alice Gemmell
Web Developer: **OPEN**
Web Master: Julio Edwards



coloradomineralsociety@comcast.net

Representatives (Board Members)

Denver Council Trustee: Debbie Kalscheur
Denver Show Rep: Amber Brenzikofer

COLORADO MINERAL SOCIETY (CMS) was founded in 1936 by a group of distinguished individuals within the mineralogical field. The organization was incorporated as a non-profit, educational organization in 1948. The Society is affiliated with the Rocky Mountain Federation of Mineralogical Societies and the American Federation of Mineralogical Societies, a founding member of each group.

PURPOSE: To promote the study of minerals and other geologic materials, to encourage mineral collecting as a hobby and to conduct public meetings, lectures, and field trips, and to engage in all activities which relate to said purposes of the organization.

MEETINGS: General membership meetings start at 7:30 PM on the first Friday of each month, October through May, at St. Paul's Episcopal Church, at 10th and Garrison in Lakewood, CO. **Visitors and Guests** are welcome.

BOARD MEETINGS: The board members meet once a month to complete the executive business and affairs of the Society. Meetings will start at 7:00 PM usually the third Tuesday of each month.

MEMBERSHIP: Open to all persons who agree to abide by Society rules and rules of the Federations. Annual fees are: \$20.00 for a Family living at the same household, \$18.00 for a Single Membership, \$15.00 for a Senior Membership (single or family over 65), and \$15.00 for junior members under the age of 18 who are not included in a family. Name badges are available for a one-time fee of \$7.50.

ANNUAL EVENTS: Yearly activities include a silent auction of minerals, fossils, gems, jewelry, equipment and other items related to our interests; participation as a member of the Denver Greater Gem and Mineral Council and the original Denver Gem and Mineral Show; and the Founder's Day celebration.

FIELD TRIPS: The Society sponsors several field trips from Spring through Fall for the purpose of collecting minerals, crystals, and fossils. These trips are one-day, two-day, and occasionally several-day adventures. A field trip guide is published each year in May.

NEWSLETTER GUIDELINES: CMS has a proud history of promoting the education and pure enjoyment of the mineralogical world. At the very heart of its existence are the many volunteers and contributors who spend their time and efforts in direct support of the club's mission. The CMS official newsletter **MINERAL MINUTES** is published monthly during the active meeting season (October through May) and a summer edition, and is the primary way the club's activities and mission are communicated to its members and prospective members. On that basis, the Board of Directors would like to offer the following content guidelines for CMS newsletter contributions:

- Formal announcements concerning club business and/or membership
- Information around mineral-related education opportunities or fundraising activities
- Stories or history that concentrate on the edifying aspects of mineral collection and education
- Sharing of personal mineral-related experience from field trips or other related adventures serving an educational purpose
- Announcements of volunteer/leadership opportunities for the club or club representation
- Worthy news events or discoveries related to mineralogy or geology that align to club's core interests
- Appropriate announcements regarding mineral shows, one-time mineral related events, mineral auctions, sale of private collections and/or equipment, etc.
- Information around relevant donations and/or gifts made available to the club or club members

Please note that the editor may correct spelling, syntax, or content to conserve space and is also entitled to bring contributions in compliance with newsletter guidelines.

Any material herein may be reproduced by any club if proper credit is given. Material from many sources is used in the Mineral Minutes. While it is believed that these items are accurate, neither the editor nor CMS assumes any liability for their use. Advertiser's claims are their own, and their products are not warranted by CMS.

Deadline for publication is the 20th of the month prior to publication. All correspondence to Mineral Minutes or questions should be sent to Amber Brenzikofer, Editor, P.O. Box 280755, Lakewood, Colorado 80228-0755; phone: 720.480.5234; or by email to:

editor.coloradomineralsociety@gmail.com



Colorado Mineral Society
PO Box 280755
Lakewood, CO 80228

FIRST CLASS MAIL



Calendar of Events

October 4, 2019, CMS General Meeting at St. Paul's
Episcopal Church, Lakewood, 7:30pm-9:30pm

November 1, 2019, CMS General Meeting at St. Paul's
Episcopal Church, Lakewood, 7:30pm-9:30pm

December 6, 2019, CMS Holiday Party at St. Paul's
Episcopal Church, Lakewood, 6:30pm-9pm

